

Customer :

customer

Customer part :

customer part

Comment :

Comment

S1=0.7

S2=11.92

Tmax=442

Tp S2=481.0

PI=0.06

HI=237

Sample =9107

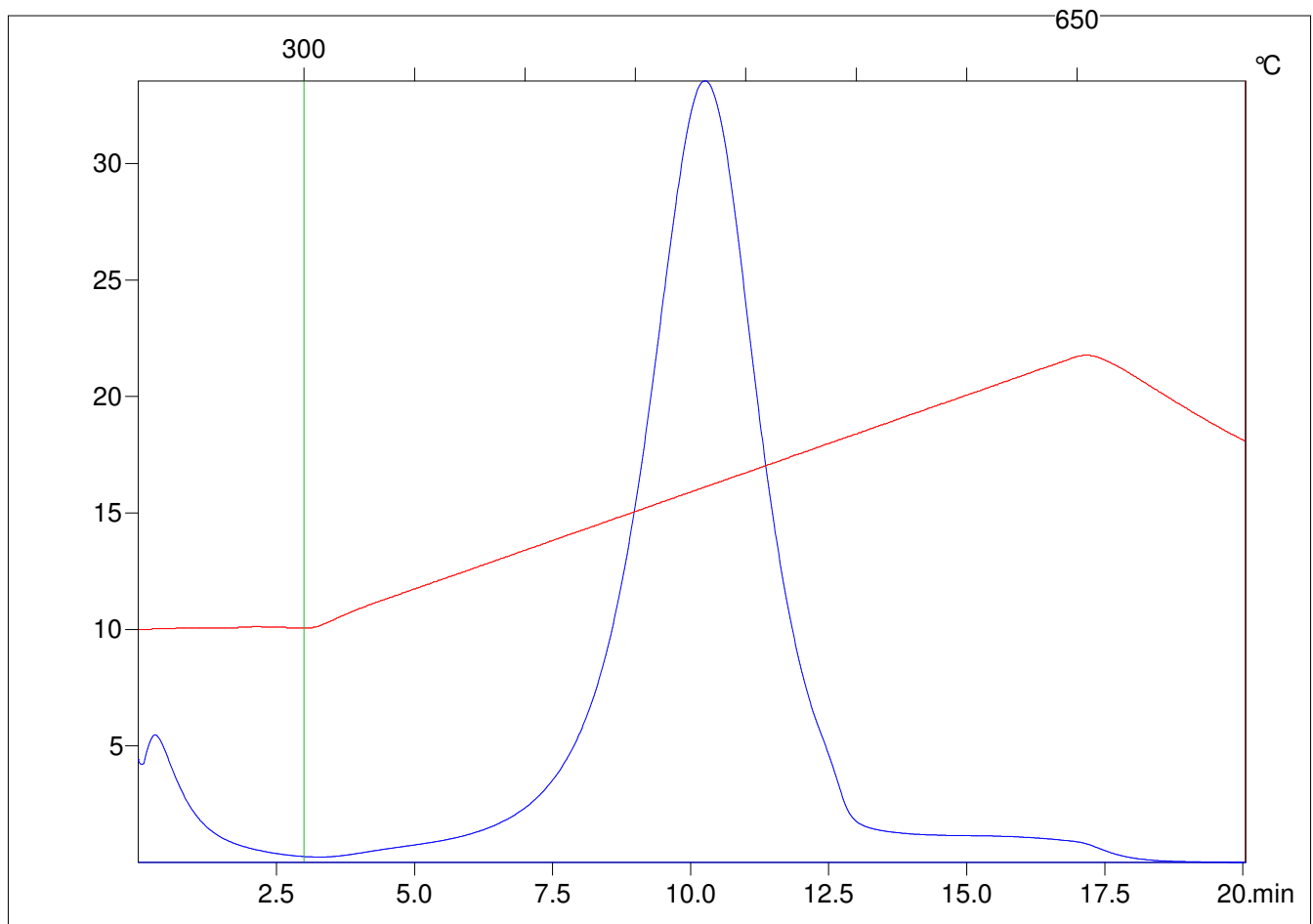
Method =Bulk Rock

Cycle=Basic

KFID(10*9)=1444

Qty =70.3

TOC=5.04



C:\VINC\PK1_1792\PK029.R00 : FID pyrolysis graphic

State

Pyro Status

Oxi Status